



Qingdao Zongjin Engineering Machinery Co.,Ltd.

ADD: #1115, International Business Center , NO.196 Zhengyang Rd , Chengyang , Qingdao , China

<http://www.chinawheelloaders.com>

E-mail:info@chinawheelloaders.com

Tel:0086-532-66739792

Fax:0086-532-66739791

Specification of mini loader 750



Excellent performance

- Perkins power features low energy consumption and environmental protection.
- The closed hydrostatic system has the feature of lower energy consumption.
- Simple quick-change construction can meet multipurpose operation of users.
- The integrated multi-functional control handle makes operation simple.
- The monitor has the LED showing of fuel level by stages.
- The unique frame hinge type is compacted and durable.
- The widely applied broad-face tyre and damping seat is safe and comfortable.
- Small working radius, mobile and flexible.



Qingdao Zongjin Engineering Machinery Co.,Ltd.

ADD: #1115, International Business Center , NO.196 Zhengyang Rd , Chengyang , Qingdao , China

<http://www.chinawheelloaders.com>

E-mail:info@chinawheelloaders.com

Tel:0086-532-66739792

Fax:0086-532-66739791

Picture:



WWW.C



Qingdao Zongjin Engineering Machinery Co.,Ltd.

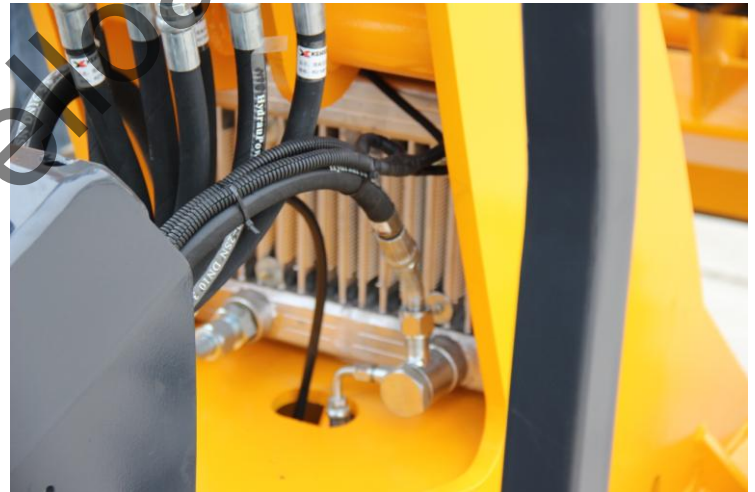
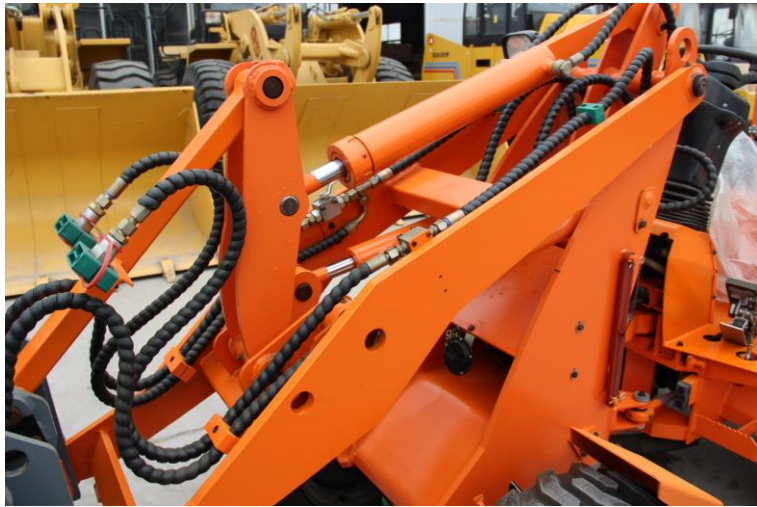
ADD: #1115, International Business Center , NO.196 Zhengyang Rd , Chengyang , Qingdao , China

<http://www.chinawheelloaders.com>

E-mail:info@chinawheelloaders.com

Tel:0086-532-66739792

Fax:0086-532-66739791



Engine	
Model	403D-11
Rated power	18.5kw(24.8BHP)
Rated speed	2800rpm
Maximum torque	67Nm
The ratio of fuel consumption	252g/kwhr



Qingdao Zongjin Engineering Machinery Co.,Ltd.

ADD: #1115, International Business Center , NO.196 Zhengyang Rd , Chengyang , Qingdao , China

<http://www.chinawheelloaders.com>

E-mail:info@chinawheelloaders.com

Tel:0086-532-66739792

Fax:0086-532-66739791

Dimensions	
Body length	3690mm
Body width(reverse tyre)	1050mm/970mm
Body height	2300mm
Minimum ground clearance	200mm
Maximum dumping height	2000mm
Dumping reach	600mm
Wheel base	1340mm
Performance parameters of the machine	
Bucket	0.4m ³
Tipping load in shovel, vehicle straight raight straight	798kg
Tipping load in shovel, vehicle at 68°	498kg
Operating weight	1470kg
The sum of the work device	8s
Driving speed	0-12km/h
Minimum turning-circle radius	
Outside face of bucket	1989mm
Outside face of tyre	1469mm
Tyre specifications	27*8.5-15TL
Maximum turning angle	±68°