



Qingdao Zongjin Engineering Machinery Co.,Ltd.

ADD: #1115, International Business Center , NO.196 Zhengyang Rd , Chengyang , Qingdao , China

<http://www.chinawheelloaders.com>

E-mail:[info@chinawheelloaders.com](mailto:info@chinawheelloaders.com)

Tel:0086-532-66739792

Fax:0086-532-66739791

## Specification of ZL20 wheel loader



### Performance and characteristic

- I、 Equipped with Cummins, Weichai, Luotuo, Huafeng engine.
- II、 The international CE certification provides an assurance in performance and safety of wheel loaders.
- III、 Joystick makes for supreme user comfort and easy control of the wheel loaders.
- IV、 Hydraulic quick change device, attached various optional tools to solve different tough work.
- V、 Strengthened and reliable transmission, drive axle.
- VI、 Optimized and choose the best quality Hydraulic component which increase the productivity ,sealing reliability.
- VII、 Articulated frame with box structure.
- VIII、 Option attachment: wooden fork, pipe/pallet fork, grass fork, rock bucket, bigger bucket, long arm etc.



Qingdao Zongjin Engineering Machinery Co.,Ltd.

ADD: #1115, International Business Center , NO.196 Zhengyang Rd , Chengyang , Qingdao , China

<http://www.chinawheelloaders.com>

E-mail:[info@chinawheelloaders.com](mailto:info@chinawheelloaders.com)

Tel:0086-532-66739792

Fax:0086-532-66739791





Qingdao Zongjin Engineering Machinery Co.,Ltd.

ADD: #1115, International Business Center , NO.196 Zhengyang Rd , Chengyang , Qingdao , China

<http://www.chinawheelloaders.com>

Tel:0086-532-66739792

E-mail:[info@chinawheelloaders.com](mailto:info@chinawheelloaders.com)

Fax:0086-532-66739791





Qingdao Zongjin Engineering Machinery Co.,Ltd.

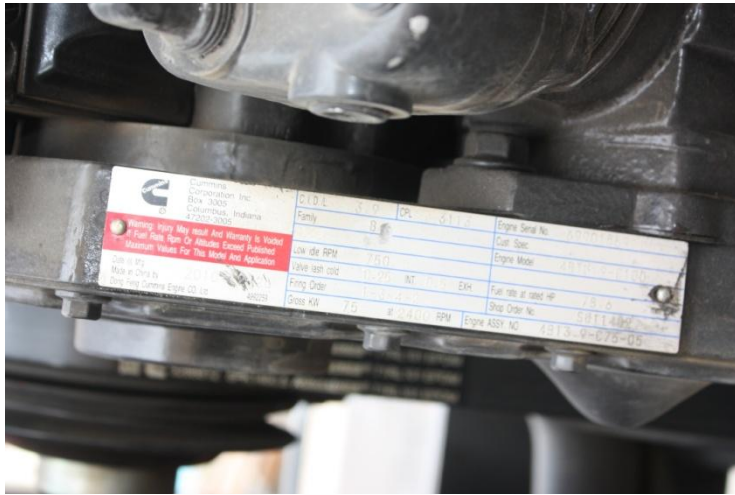
ADD: #1115, International Business Center , NO.196 Zhengyang Rd , Chengyang , Qingdao , China

<http://www.chinawheelloaders.com>

E-mail:info@chinawheelloaders.com

Tel:0086-532-66739792

Fax:0086-532-66739791



Basic Parameters	Rated Load	2000kg
	Drive ways	4wd
	Dump height	3100mm
	Log fork patulous height	1300mm
	Tire size	16/70-20
	Operating weight	5800kg
	Transmission	automatic
	Min. ground clearance	310
	Wheel base	2150
	Tread	1440
	Overall dimensions(LxWxH)	5910 x1910x2810mm
Engine Parameters	Model	YTR4108G92X
	Pattern	Inline, water cooled, dir, inject, four strokes
	Number o cylinders-internal diameter* strokes	4-100x115
	Max. torsion	206Nm
	Rated power	60KW
	Min. fuel consuming rate	221g/kw.h(243g/kw.h)
	Specified rotational speed	2400r/min
Transmission	Gear box separated from torque converter YJ280	



Qingdao Zongjin Engineering Machinery Co.,Ltd.

ADD: #1115, International Business Center , NO.196 Zhengyang Rd , Chengyang , Qingdao , China

<http://www.chinawheelloaders.com>

E-mail:info@chinawheelloaders.com

Tel:0086-532-66739792

Fax:0086-532-66739791

	<b>Model of torque device</b>	<b>3-element,single stage</b>
	<b>Pattern of gearboxes</b>	<b>full-power shift, countershaft type</b> <b>4 forward,2 reverse</b>
	<b>Number of gear shift</b>	<b>24km/h</b>
	<b>Main reducer type</b>	<b>arc taper gear, moderation of first grade</b>
	<b>Pattern of wheel side moderation</b>	<b>planed gear moderation of single</b> <b>16/70-20</b>
	<b>Tyre size</b>	<b>220Kpa</b>
	<b>Front tyre pressure</b>	<b>180Kpa</b>
	<b>Rear tyre pressure</b>	<b>B225-250</b>
	<b>Steering system</b>	<b>Pattern</b>
<b>Steering angle(each direction)</b>		<b>4239mm</b>
<b>Min. turning radius(outside of bucket)</b>		<b>ZL20E-04T.QW</b>
<b>Working hydraulic system</b>	<b>Valve distributing working</b>	<b>CBG2063</b>
	<b>Brake system</b>	<b>air assisted oil type four wheel brake</b>
	<b>Parking brake</b>	<b>Soft axle control, outside bunch drum type</b> <b>80L</b>

www.chinawheelloaders.com