



Qingdao Zongjin Engineering Machinery Co.,Ltd.

ADD: #1115, International Business Center , NO.196 Zhengyang Rd , Chengyang , Qingdao , China

<http://www.chinawheelloaders.com>

E-mail:info@chinawheelloaders.com

Tel:0086-532-66739792

Fax:0086-532-66739791

Specification of ZL60G wheel loader



Performance and characteristic

- I、 Fully hydraulic pilot control, lightweight and flexible, tender moving effect is excellent.
- II、 Efficient power shift transmission and torque converter, featured by high transmission efficiency energy saving effect.
- III、 Advanced bucket automatic leveling function, more convenient to control and reduce the labor intensity of driver.
- IV、 High power turbocharged Steyr engine and lengthened chassis and hydraulic system combined perfectly, more reliable performance, efficient and more fuel-efficient.
- V、 Single tilting cylinder-turn bucket structure to achieve huge digging force.
- VI、 The drive axle with big gear modulus and strong durability is suitable for heavy working condition, and designed for adverse conditions.
- VII、 Enhanced large space panoramic view cab, and German professional and technical spring damping quality sofa, safe and comfortable operation.



Qingdao Zongjin Engineering Machinery Co.,Ltd.

ADD: #1115, International Business Center , NO.196 Zhengyang Rd , Chengyang , Qingdao , China

<http://www.chinawheelloaders.com>

E-mail:info@chinawheelloaders.com

Tel:0086-532-66739792

Fax:0086-532-66739791





Qingdao Zongjin Engineering Machinery Co.,Ltd.

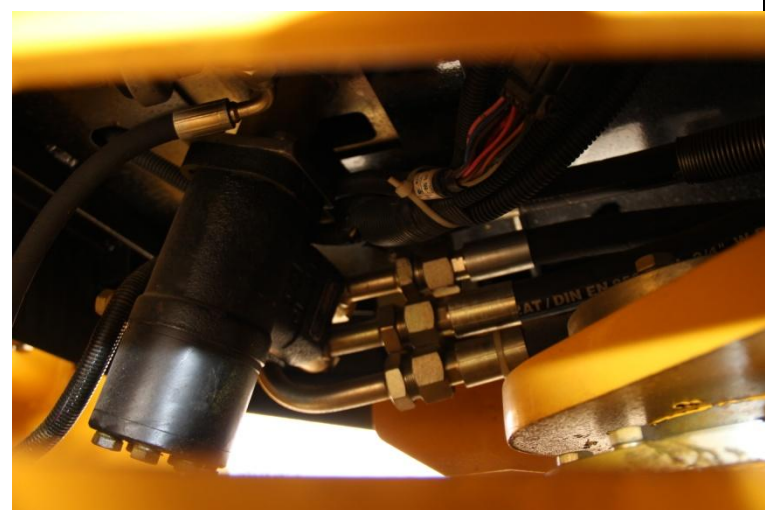
ADD: #1115, International Business Center , NO.196 Zhengyang Rd , Chengyang , Qingdao , China

<http://www.chinawheelloaders.com>

Tel:0086-532-66739792

E-mail:info@chinawheelloaders.com

Fax:0086-532-66739791





Qingdao Zongjin Engineering Machinery Co.,Ltd.

ADD: #1115, International Business Center , NO.196 Zhengyang Rd , Chengyang , Qingdao , China

<http://www.chinawheelloaders.com>

E-mail:info@chinawheelloaders.com

Tel:0086-532-66739792

Fax:0086-532-66739791



Performance	Rated load	6000kg
	Overall weight	19800kg
	Rated bucket capacity	3.3m³
	Maximum tractive force	158KN
	Maximum breakout force	204KN
	Maximum grade ability	30°
	Maximum dump height	2950mm
	Maximum dump reach	1255mm
	Overall dimension (LxWxH)	8250x3100x3400mm
	Minimum turning radius	6500mm
Engine	Model	WD10G240E21 or CUMMINS
	Type	Inline water cooling dry cylinder injection
	No. of cylinder-bore/stroke	6-126x130mm
	Rated power	175kw-2200r/min
	Maximum torque	843N.m
	Min fuel-consume ratio	≤220g/kw.h
Transmission System	Torque converter	Double turbine four original
	Gearbox number	ZL60601006
	Gear shift	2 forward shift 1reverse shift
	Maximum speed	38km/h
Drive axles	Main reducing spiral	Bevel gear grade 1 reduction
	Decelerating mode	Planetary reduction,grade 1
	Wheel base (mm)	3350mm
	Wheel tread	2250mm
	Minimum ground clearance	450mm



Qingdao Zongjin Engineering Machinery Co.,Ltd.

ADD: #1115, International Business Center , NO.196 Zhengyang Rd , Chengyang , Qingdao , China

<http://www.chinawheelloaders.com>

E-mail:info@chinawheelloaders.com

Tel:0086-532-66739792

Fax:0086-532-66739791

Hydraulic system	System working pressure	18Mpa
	Boom lifting time	6.15±0.25s
	Total time	10.65±0.5s
	Fuel tank capacity	300L
	Function of leveling automatically	Yes
Brake system	Service brake	Air over hydraulic disc brake on 4 wheels
	Parking brake	Manual parking brake
Tyre	Type specification	26.5-25
	Front tyre pressure	0.4Mpa
	Rear tyre pressure	0.35Mpa

www.chinawheelloaders.com